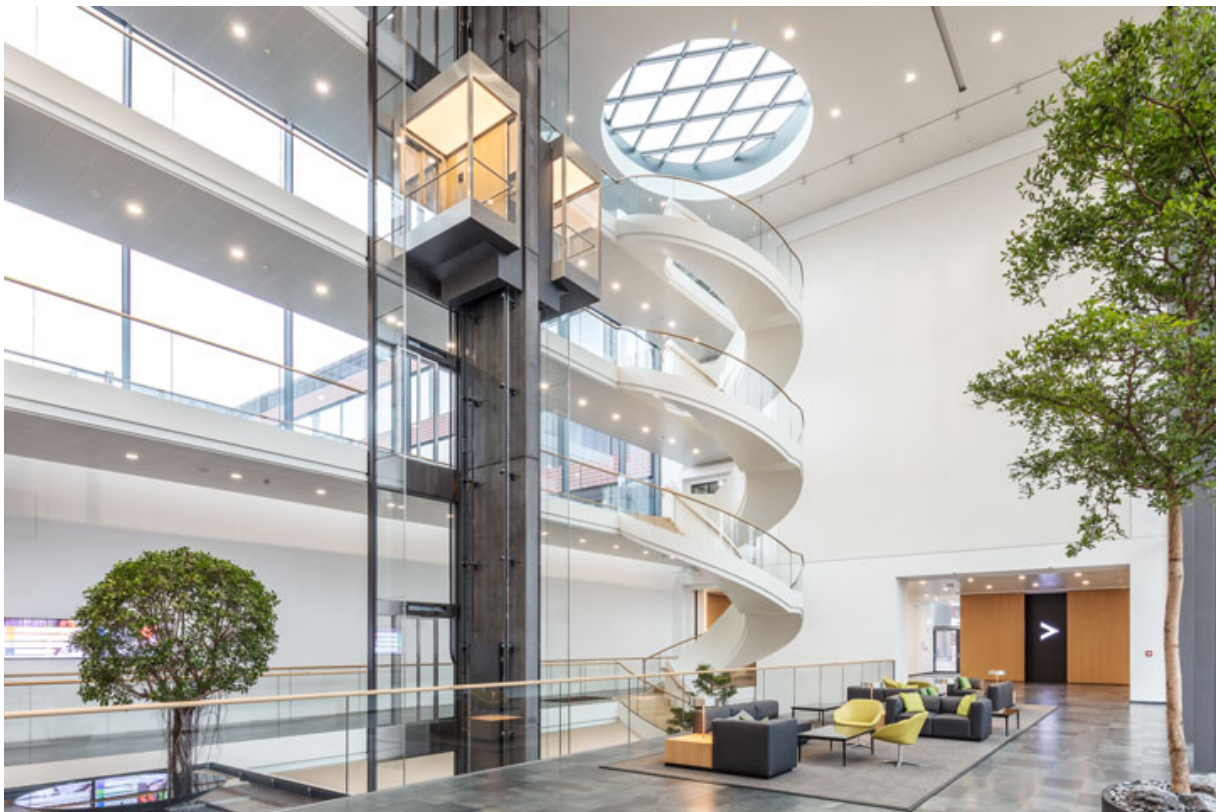


Product data sheet

Link arm TS 4000 EFS / RFS

with free swing function / free swing



Product features

Can be used up to 70 mm reveal depth with transom installation

Application Areas

For combination with a TS 4000 EFS/RFS free swing door closer

Right and left single-action doors

Product Data Table

Product features	Link arms TS 4000 EFS/RFS
Free swing function	Yes
Free swing area	80 ° 175 °
Hold-open device	No
