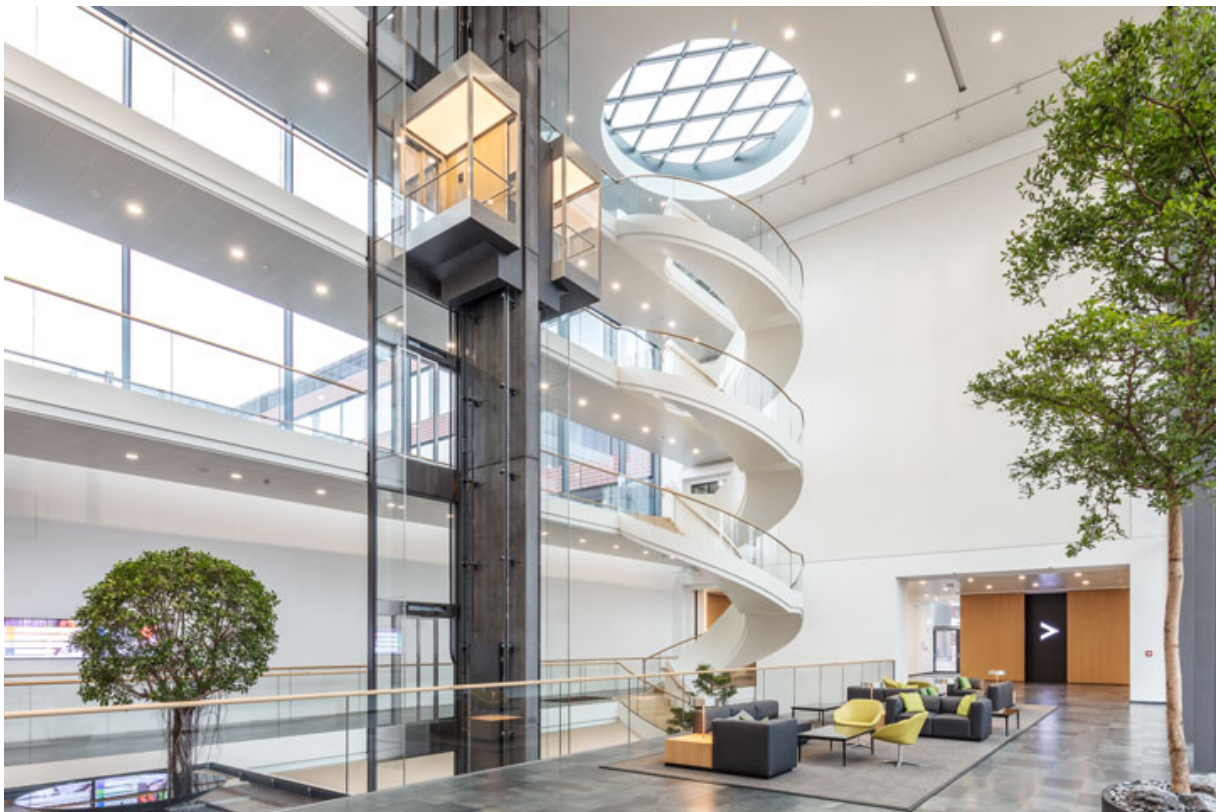


# Product data sheet

## MSW movable double-action doors - all-glass

Access element with double-action function for closed glass partitioning walls



### Product features

---

Upper and lower continuous horizontal profile offers maximum transparency

Design lines: Classicline, Pureline and Protectline

ESG and LSG can be used

Glass thickness up to 12.76 mm

Element weight up to 120 kg

Opening inwards and outwards (double-action function)

Swivelling axis left or right freely selectable

Locking facility floor spring TS 550 NV

---

### Application Areas

---

Internal and protected external area

Freely selectable position in the system front

Applicable up to 3500 mm clear height

Applicable up to 1100 mm element width

---