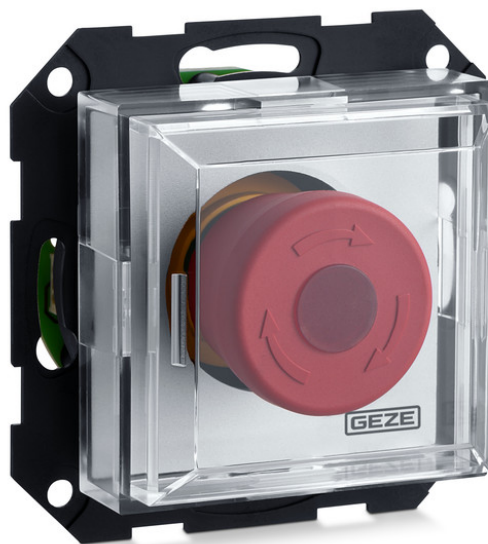


Product data sheet

NOT 320 UP *



Emergency exit system emergency push button for mains voltage shut-off in the case of an emergency or during maintenance work, surface-mounted installation

AREAS OF APPLICATION

- Mains voltage shut-off in the case of an emergency and during maintenance work
- Indirect release of GEZE emergency exit system door control units
- Opening of automatic doors in case of an emergency



PRODUCT FEATURES

- LED lighting for better visibility, even in the dark
- Re-usable cover that protects against dust and dirt
- Contact system consists of one normally closed contact and one normally opened contact
- Flat impact cover enables fast and safe activation of the illuminated emergency push button in panic situations

TECHNICAL DATA

Productname	NOT 320 UP *
Current consumption	30 mA
IP rating	IP20
Type of installation	Flush-mounted installation
Service temperature	-10 - 50 °C

VARIANTS / ORDER INFO

Designation	Description	Ident-No.	Operating voltage	Type of installation	Number of relays
NOT 320 UP emergency push button *	Without frame / Impact cover made of transparent plastic / Impact cover dimensions 55 x 55 mm / Operating voltage: 24 V DC / Current consumption: 30 mA / 1 normally closed contact / 1 normally open contact / Contact current capacity: 1A, 30 V	136571	24 V DC	Flush-mounted installation	2 Stk.
NSA320 UP (138167)		138167	24 V DC	Flush-mounted installation	2 Stk.

* The products designated above may vary in form, type, characteristics, function, or availability depending on the country. Please get in touch with your GEZE contact person if you have any questions.