

# Product data sheet

## Perlan 140 glass concealed wall bracket with 30 mm glass clamping plate



Sliding door fitting system for glass doors with a leaf weight of 80 kg and concealed wall bracket

### AREAS OF APPLICATION

- Frequently used interior sliding doors
- Living, office, and conference areas as well as hotels
- Installation of fittings in all visible areas
- For elegant room design
- Visible attachment
- Single and double leaf sliding doors



# Perlan 140 glass concealed wall bracket with 30 mm glass clamping plate

## PRODUCT FEATURES

- Sliding door fitting for leaf weights up to 80 kg
- For glass leaves with 30 mm clamping plates
- The Perlan track is screwed into the wall bracket from below, therefore covering the otherwise visible fixings when in an installed state
- Spacer profiles enable quick compensation of the interval between the track and protruding frames or foot ledge profiles
- With damping on one or both sides for doors with up to 80 kg leaf weight, so that the door is quietly slowed down and moved into the end position
- Precision ball bearings in the roller carriages offer very smooth sliding action
- Tested for durability in accordance with DIN EN 1527 over 100,000 test cycles

## TECHNICAL DATA

Productname	Perlan 140 glass concealed wall bracket with 30 mm glass clamping plate
-------------	---

## PART

### FLOOR GUIDE FOR GLASS LEAF

Floor guide with variable adjustment for glass thicknesses 8, 10 and 12 mm



Designation	Description	Ident-No.	Colour	Glass thickness
Floor guide for glass leaf (adjustable)	with variable adjustment for glass thickness 8-13.5 mm, with frieze band for noise reduction with structured glass surfaces, without attachment material	120417	silver-coloured	8 - 13.5 mm

# Perlan 140 glass concealed wall bracket with 30 mm glass clamping plate



## SET CAPS FOR GLASS CLAMPING PLATE 30 MM \*

End cap for glass clamping plate 30, set comprising 2 pieces



Designation	Description	Ident-No.	Glass thickness
Set caps for glass clamping plate 30 mm	2 caps for installation on the outer leaf side for attachment of the continuous cover and side caps, necessary where the cover panel projects > 200 mm beyond the glass clamping plate	142373	8 - 12 mm

## GLASS CLAMPING PLATE 30 MM SET, CONTINUOUSLY BLENDED

Glass clamping plate 30 for leaf weights up to 80 kg with continuous cover panels



Designation	Description	Ident-No.	Glass thickness
Glass clamping plate 30 mm set, continuously blended	Consisting of 2 glass clamping plates incl. suspension bolts, continuous bespoke cover and end caps, EV1 or stainless steel optic, up to 80 kg leaf weight, for 8-12 mm toughened safety glass	142368	8 - 12 mm

## GLASS CLAMPING PLATE 30 MM SET, WITH COVERING

Glass clamping plate 30 mm including cover for leaf weights up to 80 kg



Designation	Description	Ident-No.	Colour	Glass thickness
Glass clamping plate 30 mm set, with covering	Consisting of 2 glass clamping plates incl. suspension bolts, individual cover profiles and end caps, up to 80 kg leaf weight, for 8-12 mm toughened safety glass	142366	Stainless steel optic	8 - 12 mm
Glass clamping plate 30 mm set, with covering	Consisting of 2 glass clamping plates incl. suspension bolts, individual cover profiles and end caps, up to 80 kg leaf weight, for 8-12 mm toughened safety glass	142367	according to RAL	8 - 12 mm
Glass clamping plate 30 mm set, with covering	Consisting of 2 glass clamping plates incl. suspension bolts, individual cover profiles and end caps, up to 80 kg leaf weight, for 8-12 mm toughened safety glass	142365	EV1	8 - 12 mm

# Perlan 140 glass concealed wall bracket with 30 mm glass clamping plate



## GLASS CLAMPING PLATE 30 MM SET, WITHOUT COVER

Glass clamping plate 30 for leaf weights up to 80 kg without cover



Designation	Description	Ident-No.	Glass thickness
Glass clamping plate 30 mm set, without cover	Consisting of 2 glass clamping plates incl. suspension bolts, up to 80 kg leaf weight, for 8-12 mm toughened safety glass	142364	8 - 12 mm

## PERLAN 140 SET FOR TIMBER LEAVES

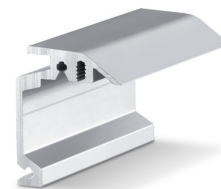
Sliding door fitting for glass leaves with up to 140 kg leaf weight



Designation	Description	Ident-No.	Colour	Leaf width (min.)	Leaf width (max.)
Perlan 140 set for timber leaves	For ceiling installation with standard suspension plate, up to 140 kg leaf weight	119354	EV1	500 mm	1040 mm
Perlan 140 set for timber leaves	For ceiling installation with standard suspension plate, up to 140 kg leaf weight	119355	EV1	500 mm	1240 mm
Perlan 140 set for timber leaves	For ceiling installation with standard suspension plate, up to 140 kg leaf weight	119353	EV1	500 mm	840 mm
Perlan 140 set for timber leaves	For ceiling installation with standard suspension plate, up to 140 kg leaf weight	119356	EV1	500 mm	1440 mm
Perlan 140 set for timber leaves	For ceiling installation with standard suspension plate, up to 140 kg leaf weight	119357	EV1	500 mm	1640 mm

## WALL BRACKET CONCEALED PERLAN

Wall bracket for concealed wall installation of tracks



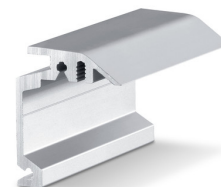
Designation	Description	Ident-No.	Colour
Wall bracket concealed Perlan	bespoke, for use with up to 37 mm leaf thickness	130468	Stainless steel optic
Wall bracket concealed Perlan	bespoke, for use with up to 37 mm leaf thickness	130462	EV1

# Perlan 140 glass concealed wall bracket with 30 mm glass clamping plate



## WALL BRACKET CONCEALED PERLAN

Wall bracket for concealed wall installation of tracks



Designation	Description	Ident-No.	Colour
Wall bracket concealed Perlan	for use up with to 37 mm leaf thickness	130463	Stainless steel optic
Wall bracket concealed Perlan	for use up with to 37 mm leaf thickness	130415	EV1
Wall bracket concealed Perlan	for use up with to 37 mm leaf thickness	130417	EV1
Wall bracket concealed Perlan	for use up with to 37 mm leaf thickness	130418	EV1
Wall bracket concealed Perlan	for use up with to 37 mm leaf thickness	130419	EV1
Wall bracket concealed Perlan	for use up with to 37 mm leaf thickness	130465	Stainless steel optic
Wall bracket concealed Perlan	for use up with to 37 mm leaf thickness	130466	Stainless steel optic
Wall bracket concealed Perlan	for use up with to 37 mm leaf thickness	130464	Stainless steel optic
Wall bracket concealed Perlan	for use up with to 37 mm leaf thickness	130414	EV1

## TRACK PERLAN 140

Track for sliding door fitting



Designation	Description	Ident-No.	Colour
Track Perlan 140	with countersunk drill holes (prepared for Perlan SoftStop)	142518	EV1
Track Perlan 140	with countersunk drill holes (prepared for Perlan SoftStop)	128660	EV1
Track Perlan 140	with countersunk drill holes (prepared for Perlan SoftStop)	128662	Stainless steel optic
Track Perlan 140	with countersunk drill holes (prepared for Perlan SoftStop)	135061	Stainless steel optic
Track Perlan 140	with countersunk drill holes (prepared for Perlan SoftStop)	135048	EV1
Track Perlan 140	with countersunk drill holes (prepared for Perlan SoftStop)	135050	Stainless steel optic
Track Perlan 140	with countersunk drill holes (prepared for Perlan SoftStop)	135049	Stainless steel optic
Track Perlan 140	with countersunk drill holes (prepared for Perlan SoftStop)	135047	EV1
Track Perlan 140	with countersunk drill holes (prepared for Perlan SoftStop)	142519	EV1
Track Perlan 140	with countersunk drill holes (prepared for Perlan SoftStop)	135046	EV1

# Perlan 140 glass concealed wall bracket with 30 mm glass clamping plate



## ACCESSORIES

### END STOP WITH ADJUSTABLE HOLD-OPEN SPRING

Adjustable end stop for Perlan sliding door fitting



Designation	Ident-No.
End stop with adjustable hold-open spring	069274

### HOLD-OPEN SPRING

Hold-open spring for Perlan 140 end stop



Designation	Ident-No.
Hold-open spring	064242

### DOOR STOP

End stop for sliding leaves



Designation	Ident-No.
Door stop	000339
Door stop	000342

# Perlan 140 glass concealed wall bracket with 30 mm glass clamping plate



## LSG GLASS / METAL GLUE \*

Glass metal glueing kit for connecting aluminium brackets with glass panes



Designation	Description	Ident-No.
LSG glass / metal glue 50 g *	for up to 30 sliding panels	133039

## LSG GLASS / METAL GLUE \*

Glass metal glueing kit for connecting aluminium brackets with glass panes



Designation	Description	Ident-No.
LSG glass / metal glue 5x1 g *	for up to 5 sliding panels	133056

## CLAMPING INSERT, GLASS CLAMPING PLATE 30 MM \*

Clamping shim for glass thicknesses of 12.76 mm (1/2 inch)



Designation	Description	Ident-No.
Clamping insert, glass clamping plate 30 mm	for 2 glass clamping plates, for use with 12.7 mm (1/2 inch) toughened safety glass	142634

## PERLAN SOFTSTOP SET, MEDIUM VERSION, DAMPED ON ONE SIDE, UP TO 80 KG

Perlan SoftStop damping on one side for leaf weights up to 80 kg and leaf widths of 900 up to 1290 mm



Designation	Description	Ident-No.	Leaf width (min.)	Leaf width (max.)
Perlan SoftStop set, medium, one side	The set includes: 2 x roller carriage with damping unit on one side, 2 x end stop, 1 x trigger with fixing screw, 2 x standard suspension plate	128877	900 mm	1290 mm

# Perlan 140 glass concealed wall bracket with 30 mm glass clamping plate



## PERLAN SOFTSTOP SET, LONG VERSION, DAMPED ON BOTH SIDES, UP TO 80 KG

Perlan SoftStop damping on both sides for leaf weights up to 80 kg



Designation	Description	Ident-No.	Leaf width (min.)	Leaf width (max.)
Perlan SoftStop set, long, both sides	The set includes: 2 x roller carriage with damping unit on both sides, 2 x end stop, 2 x trigger with fixing screws, 2 x standard suspension plate	128891	1290 mm	1700 mm

## SET PERLAN SOFTSTOPDUO, DAMPED ON BOTH SIDES

Perlan SoftStopDuo with damping on both sides up to 80 kg leaf weight



Designation	Description	Ident-No.	Leaf width (min.)	Leaf width (max.)
Perlan SoftStopDuo set, damped on both sides, up to 80 kg	The set includes: 2 x roller carriage with damping unit on both sides, 2 x end stop, 2 x trigger with fixing screws, 2 x standard suspension plate	150071	750 mm	1290 mm

## LSG GLUEING BRACKET SET \*

Aluminium glueing bracket for LSG and glass clamping plate 30



Designation	Description	Ident-No.
LSG glueing bracket set *	for use with LSG in connection with glass clamping plate 30 mm, for 2 clamping plates, without adhesive	142386



# Perlan 140 glass concealed wall bracket with 30 mm glass clamping plate



## DOOR PULL HANDLE, CONFIGURED \*

Push bar – round design for installation on glass leaves



Designation	Ident-No.	Colour
Door pull handle, configured *	127616	Stainless steel

## PERLAN SOFTSTOP SET, SHORT VERSION, DAMPED ON ONE SIDE, UP TO 80 KG

Perlan SoftStop damping on one side for leaf weights up to 80 kg and leaf widths of 575 to 900 mm



Designation	Description	Ident-No.	Leaf width (min.)	Leaf width (max.)
Perlan SoftStop set, short, one side	The set includes: 2 x roller carriage with damping unit on one side, 2 x end stop, 1 x trigger with fixing screw, 2 x standard suspension plate	128876	575 mm	900 mm

## FLOOR GUIDE SET GLASS GUIDE

Floor guide for glass sliding leaves for glass thickness 8, 10 and 12 mm



Designation	Description	Ident-No.	Colour	Glass thickness
Floor guide for glass leaf (stainless steel)	For 8, 10, 12 mm glass	134990	Stainless steel	8 - 12 mm

\* The products designated above may vary in form, type, characteristics, function, or availability depending on the country. Please get in touch with your GEZE contact person if you have any questions.