

# Product data sheet

# **TS 5000 R-ISM/S**

# **ECline \***



Overhead door closer system with guide rail for barrier-free, easy-to-open double leaf doors with integrated closing sequence control and electric hold-open device on the passive leaf, for use with hold-open magnet on the active leaf, and smoke switch control unit

## **AREAS OF APPLICATION**

- Fire and smoke protection doors
- Right and left double leaf single-action doors
- Single-action doors up to 2500 mm hinge clearance and 1250 mm leaf width
- Symmetrical and asymmetrical division of door possible
- Door leaf installation hinge side
- Hold-open systems with integrated hold-open device on passive leaf

**PRODUCT FEATURES**

- System with two door closers TS 5000 Ecline and an R-ISM/S guide rail with hold-open unit on the passive leaf
- Closing force of EN3-5 with variable adjustment
- Operating voltage 230 V AC
- Can be used for right and left hand doors without conversion
- Integrated smoke switch control unit, whose signal closes the door automatically in the event of a fire
- Smoke switch with contamination indicator and adaption of the alarm threshold
- Additional smoke detectors can be fitted
- Electric hold-open device in the guide rail with hold-open area of 80°-130°
- Active leaf is held open by a hold-open magnet or door closer with free swing function
- Hydraulic latching action which accelerates the door shortly before it is closed
- Closing speed can be individually adjusted
- Integrated back check, slows down doors that are thrown open forcefully
- Visual closing force display for easy control of the setting
- All functions can be adjusted from the front

**TECHNICAL DATA**

Productname	TS 5000 R-ISM/S Ecline *
Barrier-free in accordance with DIN 18040 up to leaf width (max.) in mm	1250 mm
Leaf width (max.)	1250 mm
Type of installation	Door leaf installation hinge side
Opening angle (max.)	180 °
Input voltage	230 V AC
Frequency of supply voltage	50 Hz
Minimum hinge clearance	1500 mm
Minimum passive leaf width	400 mm
Suitability for fire protection doors	Yes
Closing force adjustable	Yes, stepless
Adjustable closing speed	Yes
Latching action adjustable	Yes, via valve
Back check integrated	Yes, hydraulically adjustable
Position of closing force adjustment	Front
Visual closing force display	Yes
Hold-open function	Electrical
Hold-open device on the active leaf / passive leaf	No / Yes
Hold-open range	80 ° - 130 °
Smoke switch integrated	Yes

# TS 5000 R-ISM/S ECLine \*



Closing sequence control integrated

Yes

## PART

### R-ISM/S GUIDE RAIL TS 5000 \*

continuous, with integrated closing sequence control, electric hold-open device on the passive leaf, smoke switch control unit and levers



#### Designation

R-ISM/S guide rail TS 5000 \*

R-ISM/S guide rail TS 5000 \*

R-ISM/S guide rail TS 5000 \*

### CLOSER BODY TS 5000 ECLINE

Main body for overhead door closer with guide rail EN 3-5 with back check



#### Designation

TS 5000 ECLINE door closer

TS 5000 ECLINE door closer

TS 5000 ECLINE door closer

TS 5000 ECLINE door closer

## ACCESSORIES

### CB FLEX

Carry bar for safe closing of double leaf fire protection doors



# TS 5000 R-ISM/S ECline \*



## Designation

GEZE CB flex \*

GEZE CB flex

GEZE CB flex

## FLEXIBLE OPENING RESTRICTOR

For E and R guide rails, single and double leaf



## Designation

Flexible opening restrictor

## KIT ECLINE ISM / ISM BG \*

Power storage for use on the active leaf in double leaf ISM and ISM BG guide rails



## Designation

Kit ECLINE ISM / ISM BG \*

## COVER CAP DOOR CLOSER \*

For TS 5000 (L)/TS 4000, can only be used for door leaf installation



## Designation

Cover cap door closer \*

Cover cap door closer \*

Cover cap door closer \*

Cover cap door closer \*

Cover cap door closer \*

## TS 5000 R-ISM/S ECline \*



### GC 152 \*

Smoke detector for GEZE hold-open systems



#### Designation

GEZE smoke detector GC 152 \*

### GC 153 \*

Thermal detector for GEZE hold-open systems



#### Designation

GEZE thermal detector GC 153 \*

### AS 500

Manual trigger switch for the manual release of electrically controlled hold-open devices



#### Designation

AS 500 manual trigger switch

AS 500 manual trigger switch, glass

### GC 171 \*

Wireless module for wireless connection of wireless components to GEZE hold-open systems



## TS 5000 R-ISM/S ECline \*



---

### Designation

GEZE GC 171 wireless module \*

---

### GC 175 \*

Wireless input module for wireless connection of manual trigger switches to the GC 171 wireless module



---

### Designation

GEZE GC 175 wireless input module \*

---

### WIRELESS KIT FA GC 170 \*

Set comprising GC 171 wireless module and GC 172 wireless ceiling-mounted smoke detector



---

### Designation

GEZE FA GC 170 wireless KIT \*

---

### COVER CAP DOOR CLOSER \*

For TS 4000/5000, curved shape

---

### Designation

Cover cap door closer \*

---

Cover cap door closer \*

---

## TS 5000 R-ISM/S ECline \*



### COVER CAP DOOR CLOSER \*

For TS 4000/5000, rectangular shape

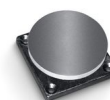
#### Designation

Cover cap door closer \*

Cover cap door closer \*

### MAGNETIC COUNTERPLATE BASIC MODEL \*

Standard version, rubber support



#### Designation

GEZE magnetic counter plate \*

### MAGNETIC COUNTERPLATE SPRING BUFFER \*

Version with spring buffer

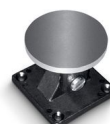


#### Designation

GEZE magnetic counter plate \*

### MAGNETIC COUNTERPLATE JOINT \*

Version with adjustable joint



#### Designation

GEZE magnetic counter plate \*

## TS 5000 R-ISM/S ECline \*



### HOLD-OPEN MAGNET BASIC MODEL \*

With screw attachment on the rear and without mounting plate



#### Designation

GEZE door hold-open magnet \*

### HOLD-OPEN MAGNET FLEXIBLE 185 MM \*

For wall or ceiling installation with stand pipe 185 mm



#### Designation

GEZE door hold-open magnet \*

### HOLD-OPEN MAGNET FLEXIBLE 335 MM \*

For wall or ceiling installation with stand pipe 335 mm



#### Designation

GEZE door hold-open magnet \*

### HOLD-OPEN MAGNET WALL INSTALLATION

For wall installation with base plate



#### Designation

GEZE door hold-open magnet



## TS 5000 R-ISM/S ECline \*



### HOLD-OPEN MAGNET WALL INSTALLATION 65 MM \*

For wall installation with base 65 mm



#### Designation

GEZE door hold-open magnet \*

### HOLD-OPEN MAGNET WALL INSTALLATION SURFACE-MOUNTED \*

For wall installation surface mounting or floor mounting with accessories and base



#### Designation

GEZE door hold-open magnet \*

### HOLD-OPEN MAGNET WALL INSTALLATION FLUSH-MOUNTED \*

For wall installation flush-mounted



#### Designation

GEZE door hold-open magnet \*

### GC 172

Wireless smoke detector for wireless connection to the GC 171 wireless module



#### Designation

GC 172 wireless smoke detector

## TS 5000 R-ISM/S ECline \*



### GC 173

Wireless thermal detector for wireless connection to the GC 171 wireless module



#### Designation

GC 173 wireless thermal detector

### INSTALLATION MATERIAL

#### MOUNTING PLATE GUIDE RAIL \*

for R-ISM guide rail



#### Designation

Mounting plate guide rail

Mounting plate guide rail

#### MOUNTING PLATE DOOR CLOSER

For TS 5000 and TS 4000 with hole pattern in accordance with DIN EN 1154 Supplement 2



#### Designation

Mounting plate door closer

Mounting plate door closer

Mounting plate door closer

Mounting plate door closer

Mounting plate door closer

Mounting plate door closer

## TS 5000 R-ISM/S ECline \*



---

### MOUNTING PLATE DOOR CLOSER \*

For TS 5000 and TS 4000 with hole pattern in accordance with DIN EN 1154 Supplement 2



---

\* The products designated above may vary in form, type, characteristics, function, or availability depending on the country. Please get in touch with your GEZE contact person if you have any questions.