

Product data sheet

TS 5000 R-ISM/0 *



Overhead door closer system with guide rail for double leaf doors with integrated closing sequence control and smoke switch without electric hold-open device

AREAS OF APPLICATION

- Fire and smoke protection doors
- Right and left double leaf single-action doors
- Symmetrical and asymmetrical division of door possible
- Single-action doors up to 2800 mm hinge clearance and 1400 mm leaf width
- Minimum hinge clearance 1500 mm, minimum width of the active leaf 875 mm and of the passive leaf 400 mm
- Hold-open systems with hold-open magnet (as accessory) and smoke switch (integrated into the guide rail)
- Door leaf installation hinge side

PRODUCT FEATURES

- System of two TS 5000 door closers and R-ISM/0 guide rail without electric hold-open device
- Closing force with variable adjustment from EN2-6
- Operating voltage 230 V AC
- Closing sequence control holds the active leaf in the waiting position until the passive leaf is closed
- Integrated smoke switch control unit, contamination indicator and adaption of the alarm threshold
- Hydraulic latching action which accelerates the door shortly before it is closed
- Closing speed can be individually adjusted
- Integrated back check, slows down doors that are thrown open forcefully
- Visual closing force display for easy control of the setting
- All functions can be adjusted from the front

TECHNICAL DATA

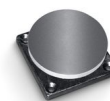
Productname	TS 5000 R-ISM/0 *
Barrier-free in accordance with DIN 18040 up to leaf width (max.) in mm	1400 mm
Leaf width (max.)	1400 mm
Type of installation	Door leaf installation hinge side
Opening angle (max.)	180 °
Input voltage	230 V AC
Frequency of supply voltage	50 Hz
Minimum hinge clearance	1500 mm
Minimum passive leaf width	400 mm
Suitability for fire protection doors	Yes
Closing force adjustable	Yes, stepless

Adjustable closing speed	Yes
Latching action adjustable	Yes, via valve
Back check integrated	Yes, hydraulically adjustable
Position of closing force adjustment	Front
Visual closing force display	Yes
Hold-open function	Electrical
Hold-open device on the active leaf / passive leaf	Optional / Optional
Hold-open range	180 °
Smoke switch integrated	Yes
Closing sequence control integrated	Yes

PART

MAGNETIC COUNTERPLATE BASIC MODEL *

Standard version, rubber support



Designation

GEZE magnetic counter plate *

MAGNETIC COUNTERPLATE SPRING BUFFER *

Version with spring buffer

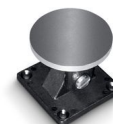


Designation

GEZE magnetic counter plate *

MAGNETIC COUNTERPLATE JOINT *

Version with adjustable joint



Designation

GEZE magnetic counter plate *

HOLD-OPEN MAGNET BASIC MODEL *

With screw attachment on the rear and without mounting plate



Designation

GEZE door hold-open magnet *

HOLD-OPEN MAGNET FLEXIBLE 185 MM *

For wall or ceiling installation with stand pipe 185 mm



Designation

GEZE door hold-open magnet *

HOLD-OPEN MAGNET FLEXIBLE 335 MM *

For wall or ceiling installation with stand pipe 335 mm



Designation

GEZE door hold-open magnet *

HOLD-OPEN MAGNET WALL INSTALLATION

For wall installation with base plate



Designation

GEZE door hold-open magnet

HOLD-OPEN MAGNET WALL INSTALLATION 65 MM *

For wall installation with base 65 mm



Designation

GEZE door hold-open magnet *

HOLD-OPEN MAGNET WALL INSTALLATION SURFACE-MOUNTED *

For wall installation surface mounting or floor mounting with accessories and base



Designation

GEZE door hold-open magnet *

HOLD-OPEN MAGNET WALL INSTALLATION FLUSH-MOUNTED *

For wall installation flush-mounted



Designation

GEZE door hold-open magnet *

TS 5000 R-ISM/O ***R-ISM/O GUIDE RAIL TS 5000 ***

continuous, with integrated closing sequence control, smoke switch control unit and levers, without electric hold-open device

**Designation**

R-ISM/O guide rail TS 5000 *

R-ISM/O guide rail TS 5000 *

R-ISM/O guide rail TS 5000 *

CLOSER BODY TS 5000

Main body for overhead door closer with guide rail EN 2-6 with back check

**Designation**

TS 5000 door closer

TS 5000 door closer

TS 5000 door closer

TS 5000 door closer

AS 500

Manual trigger switch for the manual release of electrically controlled hold-open devices

**Designation**

AS 500 manual trigger switch

AS 500 manual trigger switch, glass

ACCESSORIES

CB FLEX

Carry bar for safe closing of double leaf fire protection doors



Designation

GEZE CB flex *

GEZE CB flex

GEZE CB flex

KIT ECLINE ISM / ISM BG *

Power storage for use on the active leaf in double leaf ISM and ISM BG guide rails



Designation

Kit ECLine ISM / ISM BG *

BASE HOLD-OPEN MAGNET *

For use with floor installation



Designation

Base for floor mounting for GEZE hold-open magnet *

COVER CAP DOOR CLOSER *

For TS 5000 (L)/TS 4000, can only be used for door leaf installation



Designation

Cover cap door closer *

Cover cap door closer *

Cover cap door closer *

Cover cap door closer *

Cover cap door closer *

GC 152 *

Smoke detector for GEZE hold-open systems



Designation

GEZE smoke detector GC 152 *

GC 153 *

Thermal detector for GEZE hold-open systems



Designation

GEZE thermal detector GC 153 *

AS 500

Manual trigger switch for the manual release of electrically controlled hold-open devices



Designation

AS 500 manual trigger switch

AS 500 manual trigger switch, glass

GC 171 *

Wireless module for wireless connection of wireless components to GEZE hold-open systems



Designation

GEZE GC 171 wireless module *

GC 175 *

Wireless input module for wireless connection of manual trigger switches to the GC 171 wireless module



Designation

GEZE GC 175 wireless input module *

WIRELESS KIT FA GC 170 *

Set comprising GC 171 wireless module and GC 172 wireless ceiling-mounted smoke detector



TS 5000 R-ISM/O *



Designation

GEZE FA GC 170 wireless KIT *

FLEXIBLE OPENING RESTRICTOR

For E and R guide rails, single and double leaf



Designation

Flexible opening restrictor

COVER CAP DOOR CLOSER *

For TS 4000/5000, curved shape

Designation

Cover cap door closer *

Cover cap door closer *

COVER CAP DOOR CLOSER *

For TS 4000/5000, rectangular shape

Designation

Cover cap door closer *

Cover cap door closer *

GC 172

Wireless smoke detector for wireless connection to the GC 171 wireless module



Designation

GC 172 wireless smoke detector

GC 173

Wireless thermal detector for wireless connection to the GC 171 wireless module



Designation

GC 173 wireless thermal detector

INSTALLATION MATERIAL

MOUNTING PLATE GUIDE RAIL *

for R-ISM guide rail



Designation

Mounting plate guide rail

Mounting plate guide rail

TS 5000 R-ISM/O *



MOUNTING PLATE DOOR CLOSER

For TS 5000 and TS 4000 with hole pattern in accordance with DIN EN 1154 Supplement 2



Designation

Mounting plate door closer

Mounting plate door closer

Mounting plate door closer

Mounting plate door closer

Mounting plate door closer

Mounting plate door closer

MOUNTING PLATE DOOR CLOSER *

For TS 5000 and TS 4000 with hole pattern in accordance with DIN EN 1154 Supplement 2



* The products designated above may vary in form, type, characteristics, function, or availability depending on the country. Please get in touch with your GEZE contact person if you have any questions.