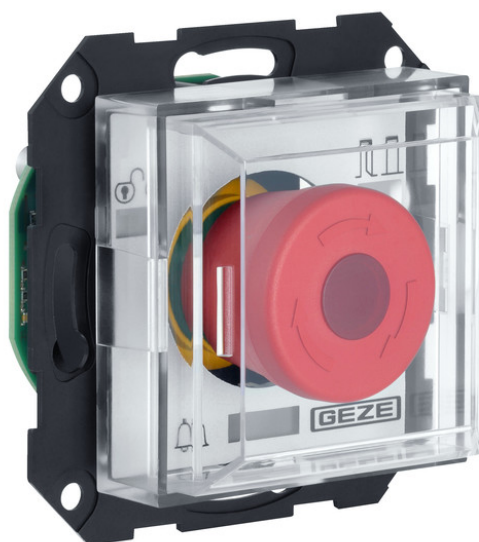


Product data sheet

T 320 UP control unit *



Slave control unit for bidirectional escape routes with a TZ 320 or TZ 322

AREAS OF APPLICATION

- Terminal functions as additional interface for a TZ 320 to trigger an indirect release of a bi-directional emergency exit
- Realisation of a bidirectional emergency exit
- Realisation of an escape balcony
- Designed for installation in 55-type flush-mounted ranges
- Can be mounted in flush-mounted sockets 62.5 mm deep

T 320 UP control unit *



PRODUCT FEATURES

- Flat impact cover enables fast and safe activation of the illuminated emergency push button in panic situations
- Coloured connectors facilitate electrical connection

TECHNICAL DATA

| | |
|--|----------------------------|
| Productname | T 320 UP control unit * |
| Type of installation | Flush-mounted installation |
| Service temperature | -10 - 50 °C |
| IP rating | IP30 |
| Operating voltage | 24 V DC |
| Current consumption | 100 mA |
| Supply voltage | 24 V DC |
| Sabotage contact | Yes |
| Emergency push button | Yes |
| Visual display | yes |
| Volume | 75 db |
| With ribbon cable | Yes |
| Conforms to the EltVTR (guidelines for electronic locking systems) | Yes |
| Conforms to EN 13637 | No |

VARIANTS / ORDER INFO

| Designation | Description | Ident-No. | Operating voltage | Type of installation |
|-------------------------|--|-----------|-------------------|----------------------------|
| T 320 UP control unit * | (no complete flush-mounting set available. Made up of individual components) / Control unit with emergency push button / Impact cover made of transparent plastic / For switch programmes in System 55 / Installation in flush-mounted sockets 62.5 mm deep / Operating voltage: 24 V DC / Current consumption: 100 mA | 140999 | 24 V DC | Flush-mounted installation |

ACCESSORIES**GIRA FRAME E2 ***

Flush-mounted frame for the installation of flush-mounted components in GIRA E2 design

**KEY SWITCH 220 UP ***

Key switch for authorised activation and changing the mode of operation of automatic doors, flush-mounted



| Designation | Description | Ident-No. | Colour | Type of installation |
|-----------------------------------|---|-----------|-----------------|----------------------------|
| SCT 220 key switch, Jung ST 550 * | Two-sided switching operation, with Euro profile half cylinder and three keys / with 1-gang frame | 094169 | alpine white | Flush-mounted installation |
| SCT 220, GIRA E2 key switch | Two-sided switching operation, with Euro profile half cylinder and three keys | 094171 | pure white matt | Flush-mounted installation |
| SCT 220, Jung LS 990 key switch * | Two-sided switching operation, with Euro profile half cylinder and three keys / with Euro profile half cylinder 30/10 / with single frame / IP rating: IP20 / W x H x D: 81 x 81 x 62.5 | 094170 | Stainless steel | Flush-mounted installation |
| SCT 220, GIRA E2 key switch * | Switch programme GIRA E2 / with Euro profile half cylinder 30/10 / with single frame / IP rating: IP20 / W x H x D: 81 x 81 x 62.5 | 094012 | pure white matt | Flush-mounted installation |
| SCT 220, Jung LS 990 key switch * | Two-sided switching operation, with Euro profile half cylinder and three keys / with Euro profile half cylinder 30/10 / with single frame / IP rating: IP20 / W x H x D: 81 x 81 x 62.5 | 089345 | Stainless steel | Flush-mounted installation |

KEY SWITCH 320 UP *

Key switch for authorised activation and for changing the mode of operation of automatic doors, flush-mounted



| Designation | Description | Ident-No. | Colour | Operating voltage | Type of installation |
|------------------------|--|-----------|--------------|-------------------|----------------------------|
| SCT 320 UP, key switch | Two-sided switching operation, with Euro profile half cylinder and three keys / with sabotage contact / with ribbon cable / Contact rating: 24 V DC, 1A / Area of application: dry rooms / Without frame | 132278 | anthracite | 24 V DC | Flush-mounted installation |
| SCT 320 UP, key switch | Two-sided switching operation, with Euro profile half cylinder and three keys / with sabotage contact / with ribbon cable / Contact rating: 24 V DC, 1A / Area of application: dry rooms / Without frame | 131984 | alpine white | 24 V DC | Flush-mounted installation |

T 320 UP control unit *

| Designation | Description | Ident-No. | Colour | Operating voltage | Type of installation |
|------------------------|--|-----------|-----------------|-------------------|----------------------------|
| SCT 320 UP, key switch | Two-sided switching operation, with Euro profile half cylinder and three keys / with sabotage contact / with ribbon cable / Contact rating: 24 V DC, 1A / Area of application: dry rooms / Without frame | 130370 | pure white matt | 24 V DC | Flush-mounted installation |

DUMMY COVER WITH SUPPORTING RING, GIRA E2 *

Flush-mounted frame for the installation of flush-mounted components in GIRA E2 design



| Designation | Ident-No. | Colour | Dimensions | Type of installation |
|---|-----------|-----------------|------------|------------------------------|
| Dummy cover with supporting ring, Gira E2 * | 142492 | anthracite | 55 x 55 mm | Surface-mounted installation |
| Dummy cover with supporting ring, Gira E2 * | 093997 | pure white matt | 55 x 55 mm | Surface-mounted installation |

* The products designated above may vary in form, type, characteristics, function, or availability depending on the country. Please get in touch with your GEZE contact person if you have any questions.