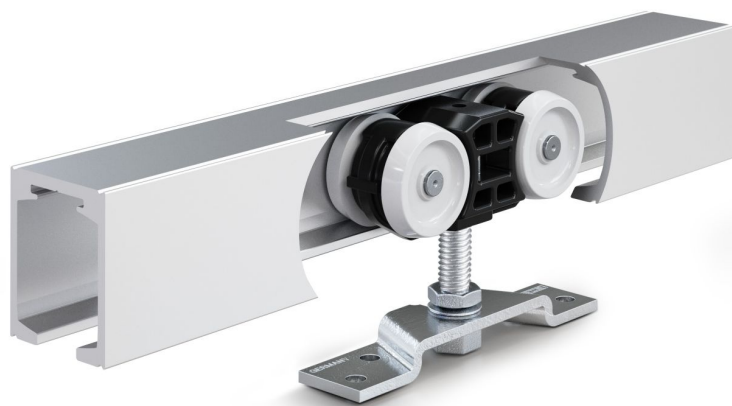


Product data sheet

Perlan 140 KS wood

Corrosion-resistant sliding fitting system for wood, plastic, or metal elements with a leaf weight of 140 kg



Product features

Extremely reliable corrosion protection for leaf weights up to 140 kg

Tested in accordance with EN 1670 Class 4 for external use or in extreme climatic conditions, such as swimming baths

For leaves made of wood, plastic, or metal

Precision ball bearings in the roller carriage mean particularly smooth running when pushing

Application Areas

Corrosion-resistant fitting for exterior use

Sliding shutters and shading systems

Installation of fittings possible in combination with overhanging weather canopy

Single and multi-leaf sliding panel

Mounting to the wall and also to the ceiling via additional ceiling brackets

Accessory

Product name

Hold-open spring

Leaf stop

Clamping insert, glass clamping plate 30 mm

Height compensation mechanism / ceiling spacer set, with variable adjustment

All-glass system stainless steel single point fixing set

Door handle rod, configured

Part

Product name

Track Perlan 140