

## TECHNICAL DATA

Tested in accordance with	VDE + EN 1155
Certification	In Germany: approval by DIBt building authorities (for GEZE hold-open systems)
Types of installation	floor, wall, ceiling, flush-mounted, surface-mounted
IP rating	IP 65
Basic magnet size GT 50 R	50 mm
Voltage / holding force	24 V / 490 N

## TECHNICAL DATA

SURFACE-MOUNTED 155570 / 155571 / 155572

Tested in accordance with	EN 1155
Certification	NOT approved for the German market
Types of installation	floor, wall, surface-mounted
IP rating	IP 54
Basic magnet size GT 48 R	48 mm
Voltage / holding force	48 V / 200 N (France) 24 V / 200 N (Italy/Spain) 230 VAC / 400 N (UK)
Color	light grey
Incl. in delivery	counter plate 115956

0514 ID Nr. 159255

**GEZE GmbH**  
Reinhold-Vöster-Str. 21-29  
71229 Leonberg  
Germany

Tel.: +49 7152 203-0  
Fax: +49 7152 203-310  
E-Mail: [vertrieb.services.de@geze.com](mailto:vertrieb.services.de@geze.com)  
[www.geze.com](http://www.geze.com)

GEZE hold-open magnets Door Technology

## STRONG SYSTEM

The GEZE range of hold-open magnets

**GEZE**

BEWEGUNG MIT SYSTEM

## DISCREET DESIGN.

## VERSATILE USE.

Hold-open magnets from GEZE are the “experts” when looking for resistant door technology. In a standardised discreet design, they are used as hold-open mechanisms to keep fire protection doors open, for example in schools or football stadiums. A hold-open angle of up to 180 degrees is possible. This stops doors projecting into the room and creates a comfortable passage.

GEZE hold-open magnets are components in the GEZE hold-open system approved by the building authorities. The system interrupts the electrical current in the event of a fire. Thereafter the GEZE hold-open magnets release the doors and close them safely.

## GEZE HOLD-OPEN MAGNETS...

...now in GEZE silver

...when combined with GEZE door closers

the design offers a unified appearance

...can be installed on the floor, wall or ceiling,

as surface-mounted or flush-mounted version

...have a concealed cable guidance

...provide an integrated inverse polarity protection

...provide a recovery/spark-extinguishing diode as overvoltage protection

...hold doors open at up to 180 degrees

...provide a convenient interruption button directly on the magnetic housing (does not replace the UTA of the AbZ in Germany)

## CLEAR SET-UP. STANDARDISED.



155569 + 155574  
Surface-mounted with floor bracket



155570 / 155571 / 155572  
Surface-mounted



155573  
Wall



155567  
Flush-mounted



115829  
Wall



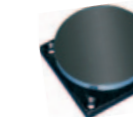
115830  
Basic model



115952  
Ceiling, wall, floor



115953  
Ceiling, wall, floor



115954  
Counter plate  
Standard



115955  
Counter plate  
Spring buffer



115956  
Counter plate  
Extreme angle

## ATTRACTION.

## AT EVERY ANGLE.

Whether mounted on the ceiling, wall or floor, surface- or flush-mounted version: Numerous installation options make the hold-open magnets flexible components of intelligent GEZE door technology.