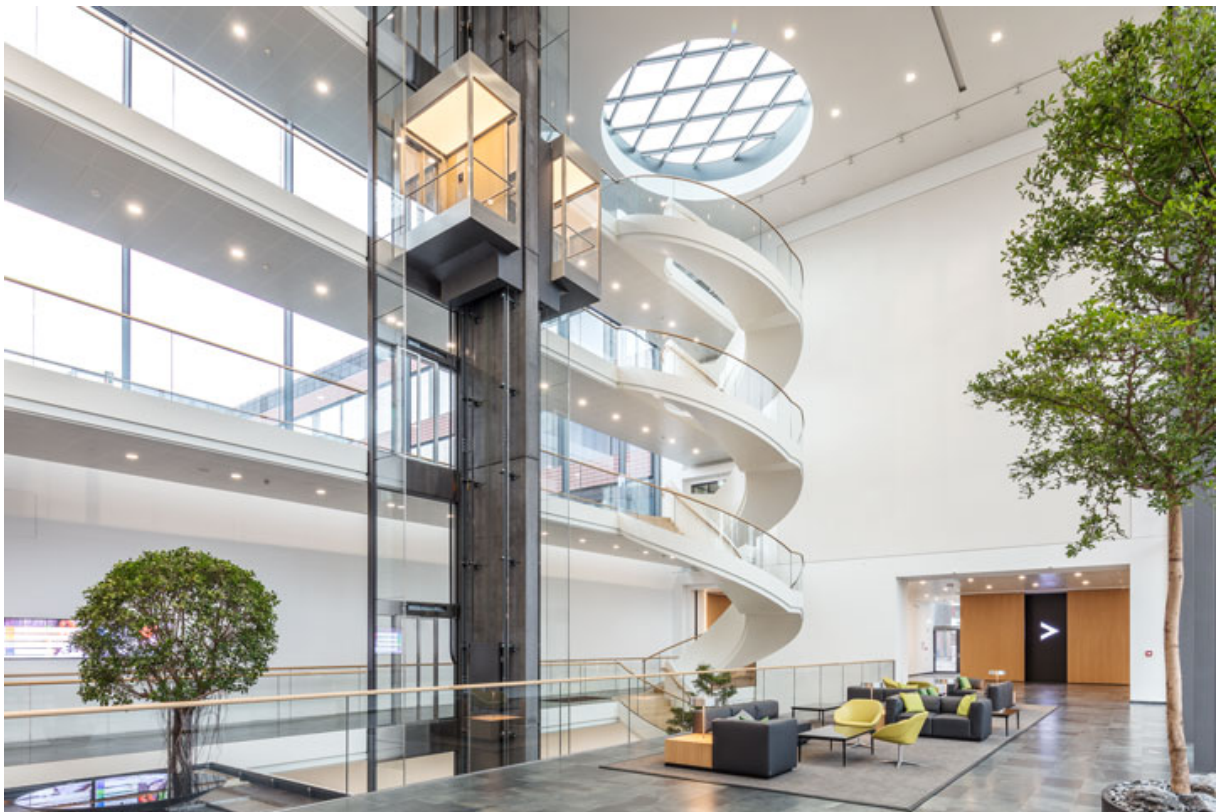


# Product data sheet

## MSW fixed panel – fine-framed

Fixed glazing in connection with / extension of movable glass partitioning walls



### **Product features**

---

- Horizontal and vertical profiles for glass framing
- Toughened safety glass ESG 10 mm flush on one side
- Insulating glass 22 mm centred applicable
- Element weight up to 125 kg
- Can be combined with all other element types - fine-framed

### **Application Areas**

---

- Internal and protected external area
- Creation of fixed glazings
- Applicable up to 3000 mm clear height
- Applicable up to 1500 mm element width