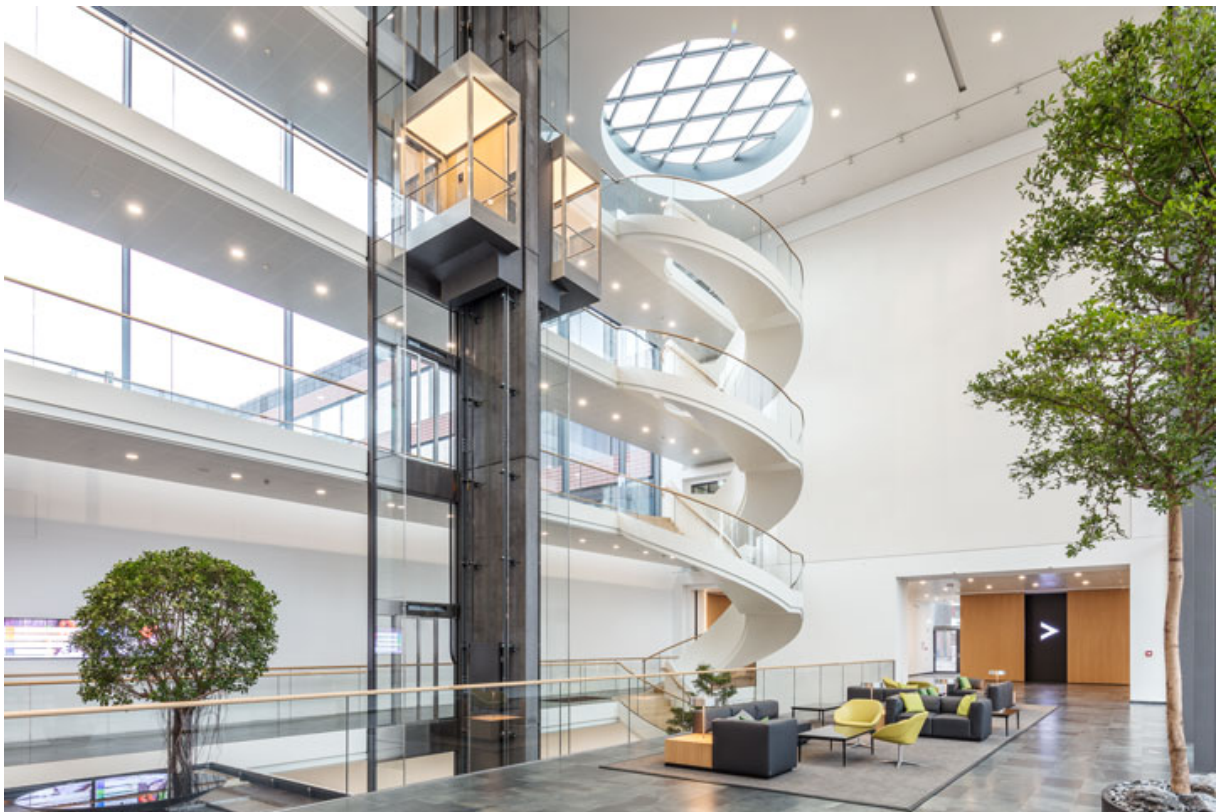


Product data sheet

Closer body TS 4000 E KM BG

Main body for overhead door closer with link arm EN 1-6 with electric hold-open device



Product data sheet

Closer body TS 4000 E KM BG

Product features

Front adjustable closing force with variable adjustment
Closing force display ensures correct setting
Closing speed can be adjusted from the front via valve
Latching action can be adjusted via link arm
Electric hold-open device
Door closer, can be used for right and left hand doors
Supply voltage 24 V DC
Same mounting hole pattern as all GEZE TS 4000 closers

Application Areas

Fire and smoke protection doors
Right and left single-action doors
Single-action doors up to 1400 mm leaf width
Transom installation opposite hinge side

Product Data Table

Product features	GEZE TS 4000 E KM BG Closer
Closing force in accordance with EN 1154	Yes, stepless 1 2 3 4 5 6
Leaf width (max.)	1400 mm
Same version for DIN left and DIN right	true
Supply voltage	24 V DC
Electrical power consumption	1 W
Duty rating	100 %
Residual ripple	20 %
IP rating	IP43
Approvals	Door closer tested in accordance with EN 1154, Hold-open device tested in accordance with EN 1155
Suitability for fire protection doors	Yes
Length	325 mm
Width	46 mm
Height	60 mm
Adjustable closing force	Yes, stepless
Adjustable closing speed	Yes
Adjustable latching action	Yes, via link arm
Integrated back check	No
Position of closing force adjustment	Front
Visual closing force display	Yes

Safety valve against wilful damage	Yes
Thermo-control valves	Yes
Hold-open device	Electrical